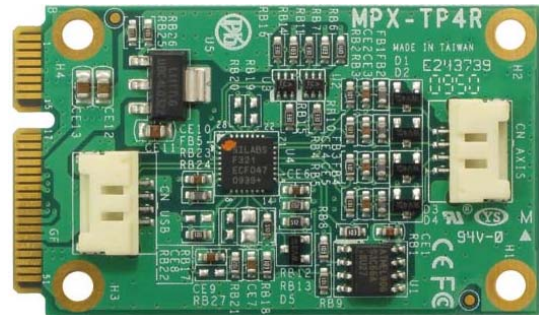


PCI Express mini Card

MPX-TP4R

4 wire resistive USB interface

Touch screen controller



Form Factor	PCI Express mini card
Features	Protocol: USB 1.1 Low Speed/USB 2.0 Full Speed A/D resolution: 11 bits Supplied Voltage: 3.3 VDC, 50 mVpp maximum ripple Max. report rate: 250 pps(USB) Response time: max. 25 ms
Dimensions (W x D)	30.00mm x 50.95mm

Ordering Code

MPX-TP4R PCI Express mini card supports Touch screen
 Art. No. 123497