

Quick Start for ECAT-2051

English / July,2016/ Ver 1.0

1 Shipping Package

This shipping package contains the following items

1 x ECAT-2000 module

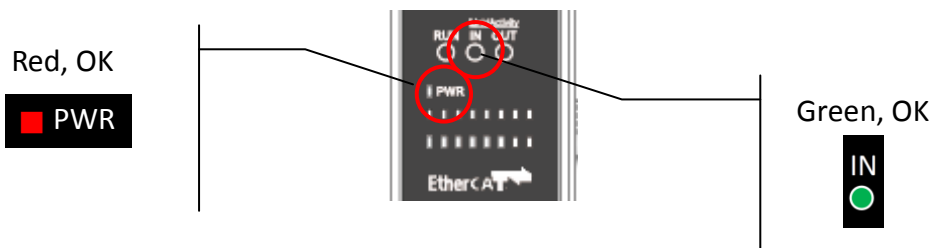
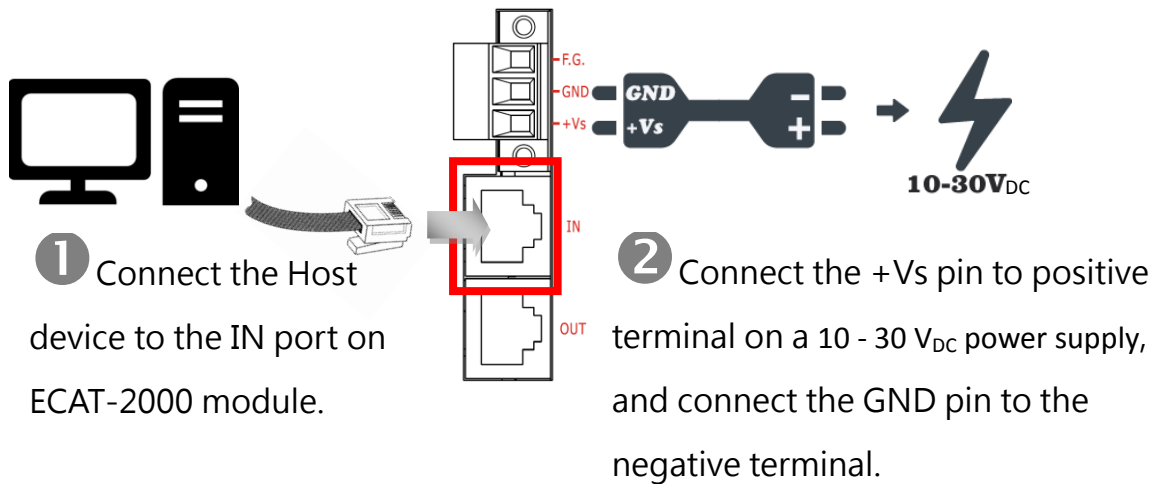


1 x Quick Start Guide (This Document)



2 Connecting the Power and Host device

Switch on module and connect it to an EtherCAT network



3 Search Modules



ESI file

The latest ESI file (ICPDAS ECAT-2000.xml) can be downloaded from ICP DAS website at

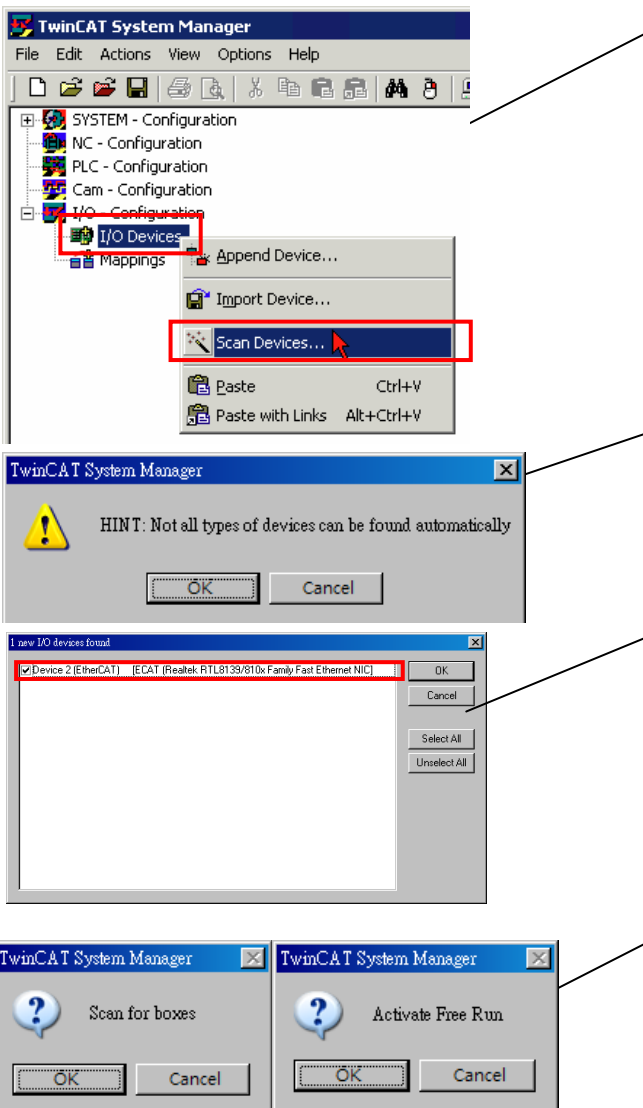
 http://ftp.icpdas.com/pub/cd/fieldbus_cd/ethercat/slave/ecat-2000/software/

Install the ESI file

Copy the “ICPDAS ECAT-2000.xml” file to the Master Tools installation folder, as indicated in the table below.

Software	Default Path
Beckhoff EtherCAT Configuration	C:\EtherCAT Configurator\EtherCAT
Beckhoff TwinCAT 3.X	C:\TwinCAT\3.x\Config\Io\EtherCAT
Beckhoff TwinCAT 2.X	C:\TwinCAT\Io\EtherCAT

Run the EtherCAT Master software (Beckhoff TwinCAT 2.X)



The image shows four sequential screenshots of the TwinCAT System Manager software interface. The first screenshot shows the 'I/O Configuration' tree with 'I/O Devices' selected and the 'Scan Devices...' context menu option highlighted. The second screenshot shows a 'HINT' dialog box with an 'OK' button. The third screenshot shows a list of found I/O devices, with 'Device 2 (EtherCAT)' selected. The fourth screenshot shows two dialog boxes: 'Scan for boxes' and 'Activate Free Run', both with 'OK' buttons.

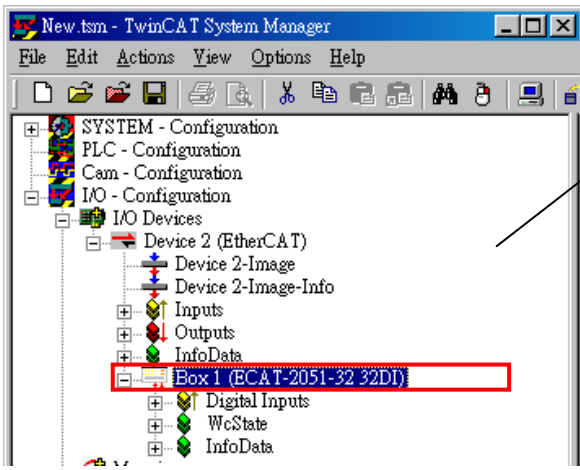
Switch on power

Execute the TwinCAT System Manager(Config mode)
I/O Devices-> Right click-> Scan Devices...

Click OK

Choose the correct network device which is
connected to ECAT-2000

Click Yes to start scanning and click Yes to
activate the free run mode for TwinCAT system
manager

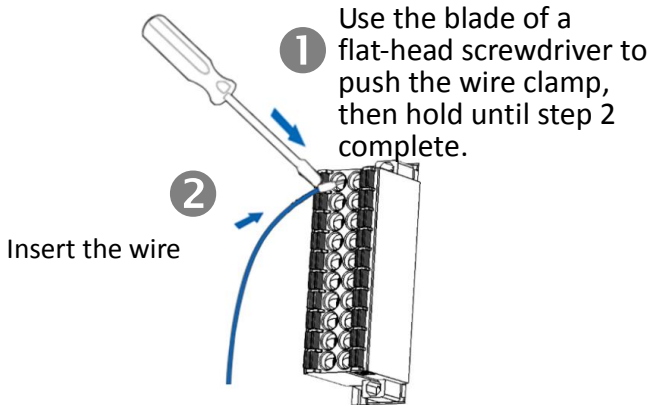


ECAT-2000 is now shown in the TwinCAT system Manager

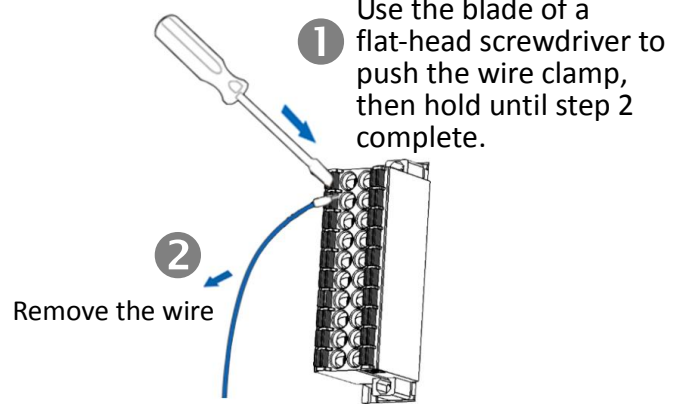
4 Wiring to the connector

Wiring Tip

Connection the Wire



Removing the wire



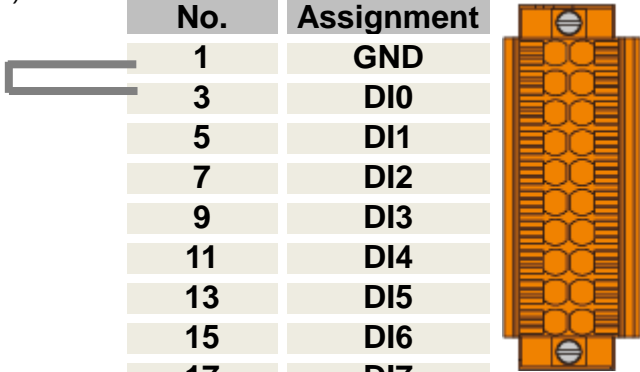
Wire Diagrams

Digital Input/Counter	Readback as 1 (+10 ~ +50 VDC)	Readback as 0 (Open or < 4VDC)
Sink		
Source		
Digital Input/Counter	Readback as 1 (Close to GND)	Readback as 0 (Open)
Dry		

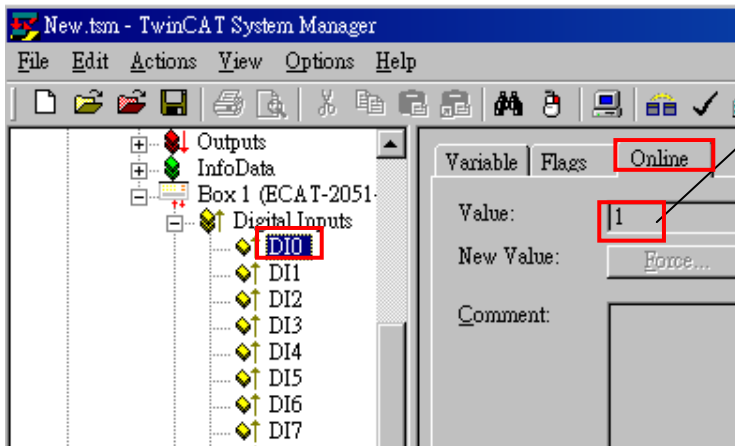
Wiring the DIO Pins

Connect the DI0(Pin3) to GND (Pin1)

Terminal No.	Pin Assignment	Pin Assignment	Terminal No.
1	GND	GND	2
3	DI0	DI8	4
5	DI1	DI9	6
7	DI2	DI10	8
9	DI3	DI11	10
11	DI4	DI12	12
13	DI5	DI13	14
15	DI6	DI14	16
17	DI7	DI15	18
19	DI.COM	DI.COM	20



Verifying the DI functionality



In the left-hand of the window, click DI0.
In the right-hand of the windows, click the online.
Check Value is 1.



Related Information

Product Page:

http://www.icpdas.com/root/product/solutions/industrial_communication/fieldbus/ethercat/io_module/ecat-2051.html

Documentation:

ftp://ftp.icpdas.com/pub/cd/fieldbus_cd/ethercat/slave/ecat-2000/

ESI file:

http://ftp.icpdas.com/pub/cd/fieldbus_cd/ethercat/slave/ecat-2000/software/

DP-665(Optional) Product Page:

http://www.icpdas.com/products/Accessories/power_supply/dp-665.htm