

GW-7473 QUICK START



GW-7473

English/ Dec. 2014/ Version 1.1

1

What's in the shipping package?

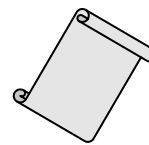
The package includes the following items:



GW-7473



Software CD



Quick Start
(This Document)



CA-002
(DC connector to
2-wire power cable)

2

Installing software on your PC

■ **Install GW-7473 Utility:**

The software is located at:

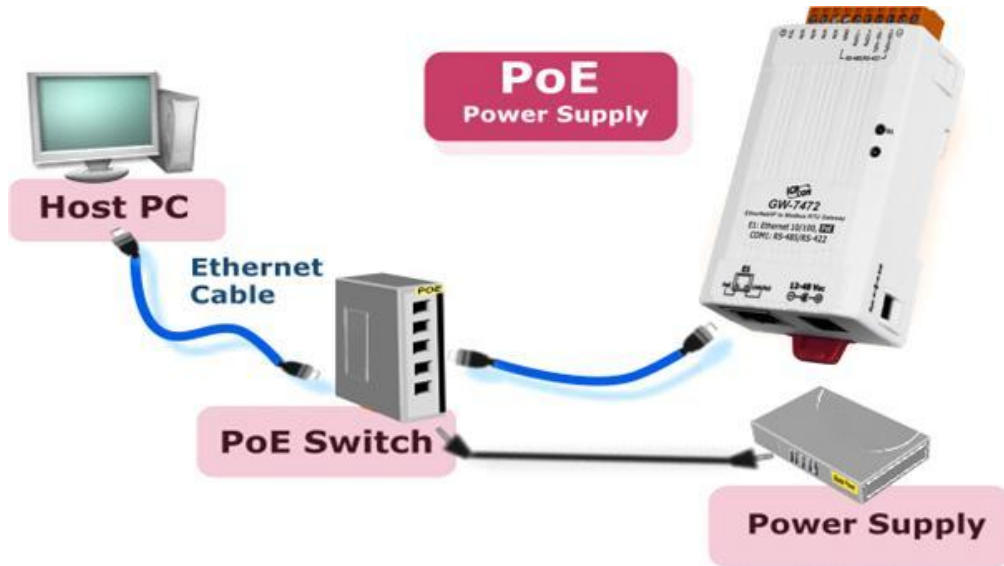
Fieldbus_CD:\EtherNetIP\Gateway\GW-7473\Utility

http://ftp.icpdas.com/pub/cd/fieldbus_cd/ethernetip/gateway/gw-7473/utility/

3 Connecting the Power and Host PC

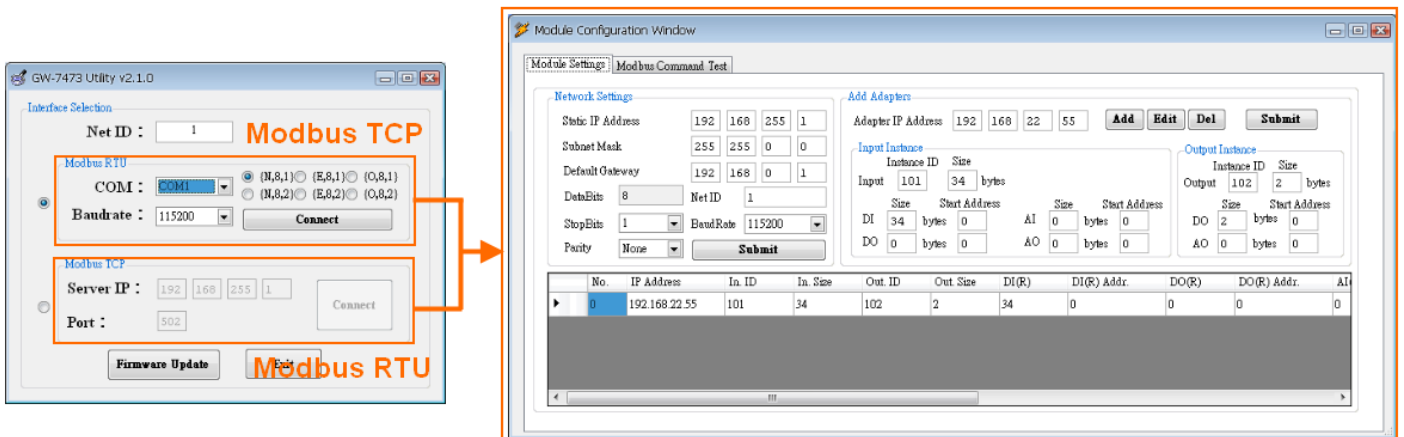
1. Make sure your PC has workable network settings.
2. Disable or well configure your Windows firewall and anti-virus firewall first.
3. Check Init/Run DIP switch if it is on **Run** position.
4. You can make Modbus RTU connections between PC and GW-7473 with RS-485/RS-422 converter ◦
5. Connect both the GW-7473 and your computer to the same sub network or the same Ethernet switch, and power the GW-7473 on. GW-7473 also supports to PoE connections. Users can make a PoE connection with a PoE switch.





4 GW-7473 Utility

1. Double click the GW-7473 Utility shortcut on the desktop.
2. Select the connection interface Modbus RTU or Modbus TCP.
3. Click "connect" to open "Module Configuration" window.



5

GW-7473 Configurations

Ethernet and Modbus RTU

1. On the Diagnostic window, users can modify the Ethernet and Modbus RTU parameters with "Network Settings".

Ethernet

Static IP Address	192	168	22	73
Subnet Mask	255	255	0	0
Default Gateway	192	168	0	1

Modbus RTU

DataBits	8	Net ID	1
StopBits	1	BaudRate	115200
Parity	None	Submit	

2. Ethernet Configurations: "Static IP Address", "Subnet Mask" and "Default Gateway". The default Ethernet settings are shown below.

Item	Settings (Init Mode)
IP	192.168.255.1
Gateway	192.168.0.1
Mask	255.255.0.0

3. Modbus RTU Configurations: "Net ID", "Baud Rate", "Data Bits", "Stop Bits" and "Parity". The default Modbus settings are shown below.

Item	Settings (Init Mode)
Net ID	1
Baud Rate	115200
Data Bits	8
Stop Bits	1
Parity	None

4. Click "Submit" to finish the configurations.

EtherNet/IP Adapter

1. Users can set the EtherNet/IP adapter information to the GW-7473 with "Adapter Settings" window. There are "Static IP Address", "Input Instance" and "Output Instance".

Adapter Settings

Static IP Address: 192 168 22 55 [Add] [Edit] [Del] [Submit]

Input Instance

Instance ID	Size				
Input	101	34 bytes			
DI	34 bytes	Start Address	0	AI	0 bytes
DO	0 bytes	Start Address	0	AO	0 bytes

Output Instance

Instance ID	Size				
Output	102	2 bytes			
DO	2 bytes	Start Address	0		
AO	0 bytes	Start Address	0		

2. Click "Add" to add a new EtherNet/IP adapter information to the menu. Click "Edit" to modify the menu. Click "Del" to remove the adapter information on the menu. Click "Submit" to save the configurations.

No.	IP Address	In. ID	In. Size	Out. ID	Out. Size	DI(R)	DI(R) Add
0	192.168.22.55	101	34	102	2	34	0

3. GW-7473 will connect to the EtherNet/IP adapter automatically after rebooting.

6

Modbus Command

1. On the Modbus Command window, users can modify the Modbus command. Click "Add" to add a Modbus Command to the menu. Click "Remove" to remove the command on the menu.

The screenshot shows a 'Request' configuration window with the following fields and controls:

- NetID (dec): (1~247)
- Interval: ms
- Function Code: (dropdown menu)
- Address (dec): (0~65535)
- Count (dec): bits
- Buttons: Add, Remove, START, STOP

2. Click "START" to send Modbus command. Click "STOP" to finish the process.

	Device	ID	Function Code	Start Address	Count
▶	MBRTU	1	2	0	8
	MBRTU	1	15	0	8

Related Information

- **GW-7473 Product page:**
http://www.icpdas.com/products/Remote_IO/can_bus/GW-7473.htm
- **GW-7473 Documentations:**
Fieldbus_CD:\EtherNetIP\Gateway\GW-7473\Manual
http://ftp.icpdas.com/pub/cd/fieldbus_cd/ethernetip/gateway/gw-7473/manual/
- **GW-7473 Utility:**
Fieldbus_CD:\EtherNetIP\Gateway\GW-7473\Utility
http://ftp.icpdas.com/pub/cd/fieldbus_cd/ethernetip/gateway/gw-7473/utility/
- **GW-7473 firmware:**
Fieldbus_CD:\EtherNetIP\Gateway\GW-7473\firmware
http://ftp.icpdas.com/pub/cd/fieldbus_cd/ethernetip/gateway/gw-7473/firmware/



ICP DAS Web Site: <http://www.icpdas.com>
Contact Us (E-Mail): Service@icpdas.com