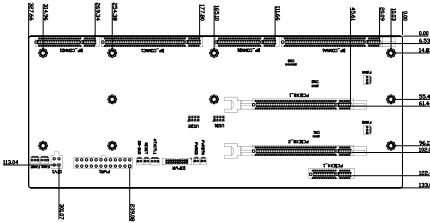


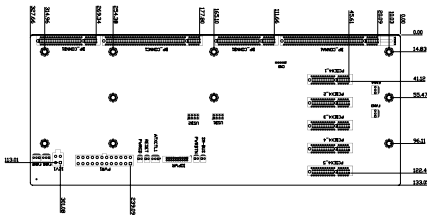
SPE-4S



Ordering Information

- SPE-4S-R10 4 Slot PICMG 1.3 Backplane with 2 PCIe x16 (x8 signal) and 1 PCIe x4 slots
- PAC-106G-R20 6-slot full-size industrial chassis
- PAC-107G-R20 6-slot full-size industrial chassis
- PAC-1000G 6-slot full-size industrial chassis
- PACO-506F 6-slot full-size industrial chassis

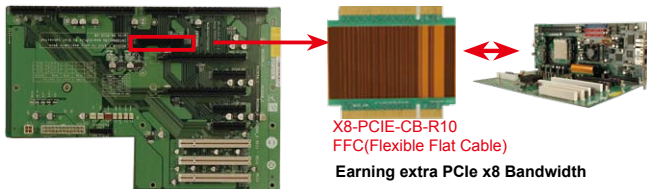
SPE-6S



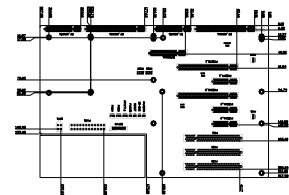
Ordering Information

- SPE-6S-R10 6 Slot PICMG 1.3 Backplane with 5 PCIe x4 slots
- PAC-106G-R20 6-slot full-size industrial chassis
- PAC-107G-R20 6-slot full-size industrial chassis
- PAC-1000G 6-slot full-size industrial chassis
- PACO-506F 6-slot full-size industrial chassis

SPE-9S



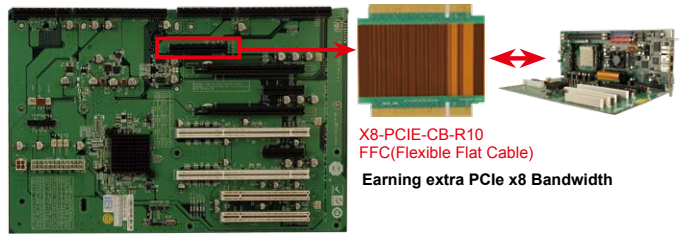
X8-PCIE-CB-R10
FFC(Flexible Flat Cable)
Earning extra PCIe x8 Bandwidth



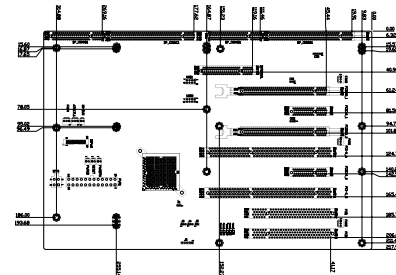
Ordering Information

- SPE-9S-R10 9 Slot PICMG 1.3 Backplane with 2 PCIe x16 (x8 signal) 3 PCIe x4, and 3 PCI
- PAC-125G-R20 10-slot full-size industrial chassis
- X8-PCIE-CB-R10 PCIe x8 Connection Board for SPCIE-3600AM2

SPXE-9S



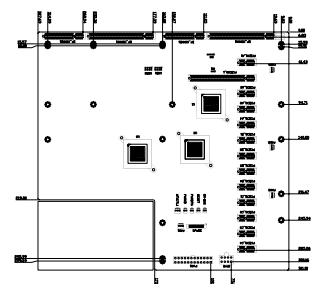
X8-PCIE-CB-R10
FFC(Flexible Flat Cable)
Earning extra PCIe x8 Bandwidth



Ordering Information

- SPXE-9S-R10 9 Slot PICMG 1.3 Backplane with 2 PCIe x16 (x8 signal) 2 PCIe x4, 2 PCI-X, and 2 PCI
- PAC-125G-R20 10-slot full-size industrial chassis
- X8-PCIE-CB-R10 PCIe x8 Connection Board for SPCIE-3600AM2

SPXE-14S

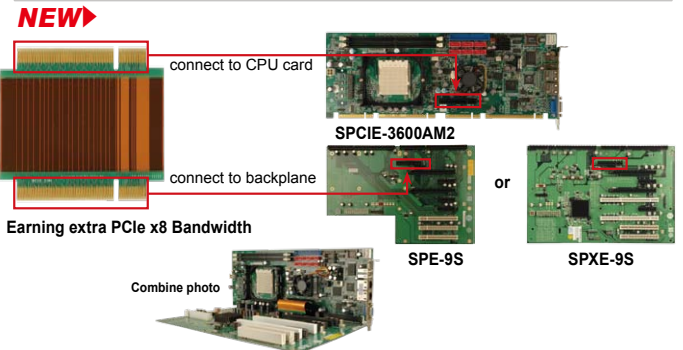


Ordering Information

- SPXE-14S-R10 14-Slot PICMG 1.3 Backplane with 1 PCIe x16 (x8 signal) and 12 PCIe x1
- RACK-305G-R20 4U rack-mount industrial chassis
- RACK-360G-R20 4U rack-mount industrial chassis
- RACK-814G-R20 4U rack-mount industrial chassis
- RACK-3000G-R20 4U rack-mount industrial chassis

X8-PCIE-CB-R10

PCIe x8 conversion board for PICMG 1.3 server grade SBC



Earning extra PCIe x8 Bandwidth

Combine photo

Ordering Information

- X8-PCIE-CB-R10 PCIe x8 conversion board for PICMG 1.3 server grade SBC
- SPCIE-3600AM2 Full-size PICMG 1.3 CPU card, server grade
- SPE-9S 9 slot PICMG 1.3 backplane with 2 PCIe x16 (x8 signal) 3 PCIe x4, and 3 PCI
- SPXE-9S 9 slot PICMG 1.3 backplane with 2 PCIe x16 (x8 signal) 2 PCIe x4, 2 PCI-X and 2 PCI