



# EC2-C32 series Quick Start

v1.0, Apr. 2023

## Packing List

In addition to this guide, the package includes the following items:



EC2-C32

## Technical Support

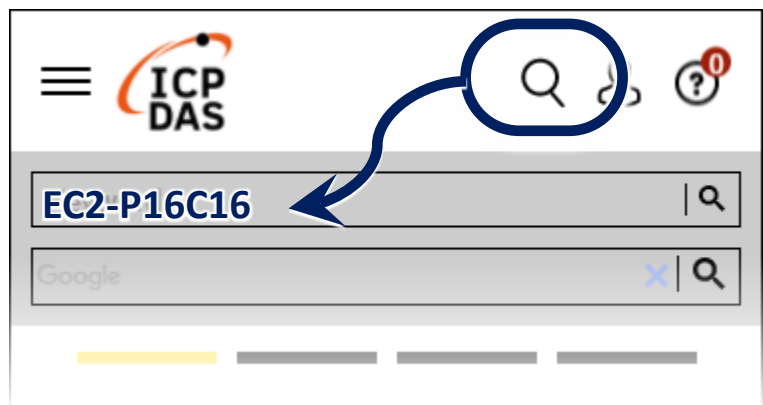
[service@icpdas.com](mailto:service@icpdas.com)

[www.icpdas.com](http://www.icpdas.com)

## Resources

How to search for ESI, manuals and spec information on ICP DAS website.

- For Mobile Web



- For Desktop Web



## Related Information

For more detailed information related to the manual, hardware manual:

<http://www.icpdas.com/en/download/index.php?model=EC2-C32>

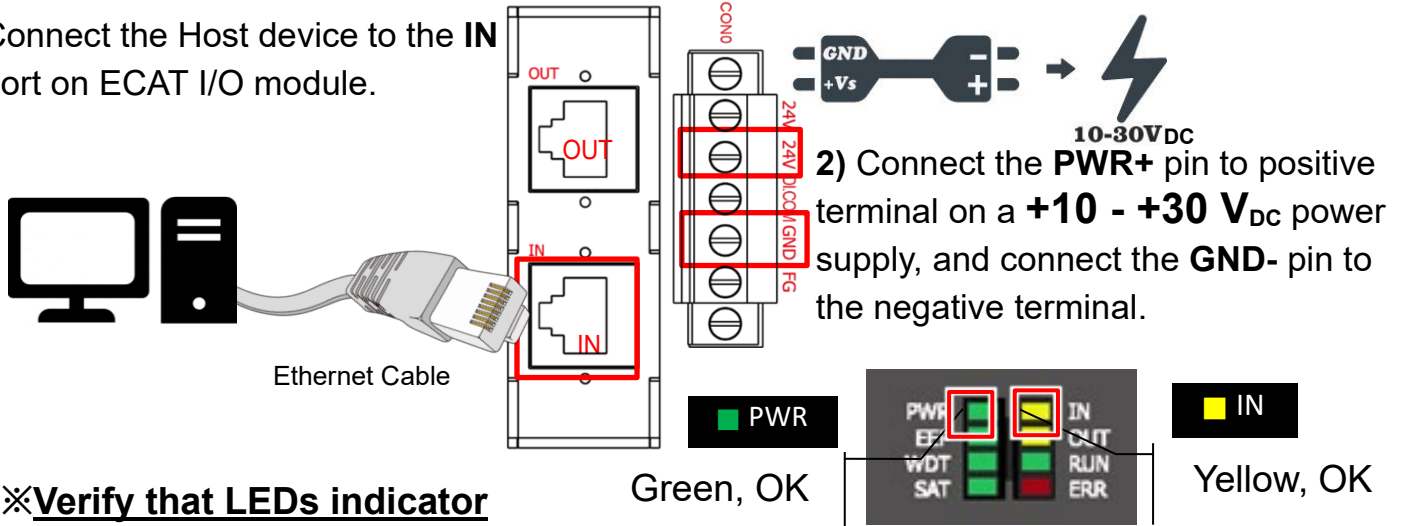
# 1 Connecting the Power and Host

※Switch on module and connect it to an EtherCAT network

**! NOTE:**

Attaching an ESC directly to an office network will result in network flooding, since the ESC will reflect any frame – especially broadcast frames – back into the network (broadcast storm).

1) Connect the Host device to the **IN** port on ECAT I/O module.



※Verify that LEDs indicator

# 2 Search Modules

Download and Unzip file to get ESI file

The latest ESI file (**ECx-DIO....xml**) can be downloaded from website at

 [ECx-DIO ESI XML.zip](#)

Unzip the “**ECx-DIO....zip**” to get the “**ECx-DIO....xml**” ESI file(XML format)

Install the ESI file

Copy the “**ECx-DIO....xml**” file to the Master Tools installation folder, as indicated in the table below.

Software	Default Path
Beckhoff EtherCAT Configuration	<a href="#">C:\EtherCAT Configurator\EtherCAT</a>
Beckhoff TwinCAT 3.X	<a href="#">C:\TwinCAT\3.x\Config\Io\EtherCAT</a>
Beckhoff TwinCAT 2.X	<a href="#">C:\TwinCAT\Io\EtherCAT</a>

Run the EtherCAT Master software (Beckhoff TwinCAT 2.X)

Switch on power and execute the TwinCAT System Manager (Config mode)

**1. I/O Devices → Right click → Scan Devices...**

**2. Click "OK" button**

**3. Choose the correct network device which is connected to Module and click "OK" button**

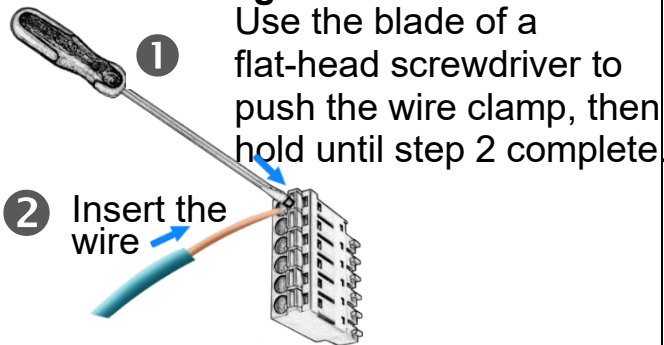
**4. Click "OK" to start scanning Click "OK" to activate the free run mode for TwinCAT system manager**

**5. In the left-hand window, Module is now shown in the TwinCAT system Manager**

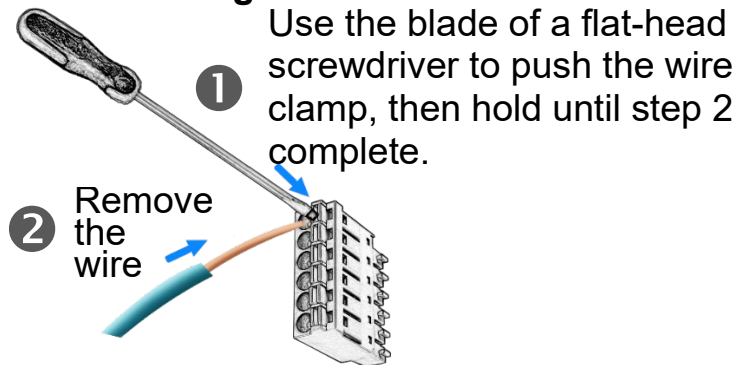
# 3 Wiring to the Connector

## ➤ Wiring Tip

### Connecting the wire



### Removing the wire



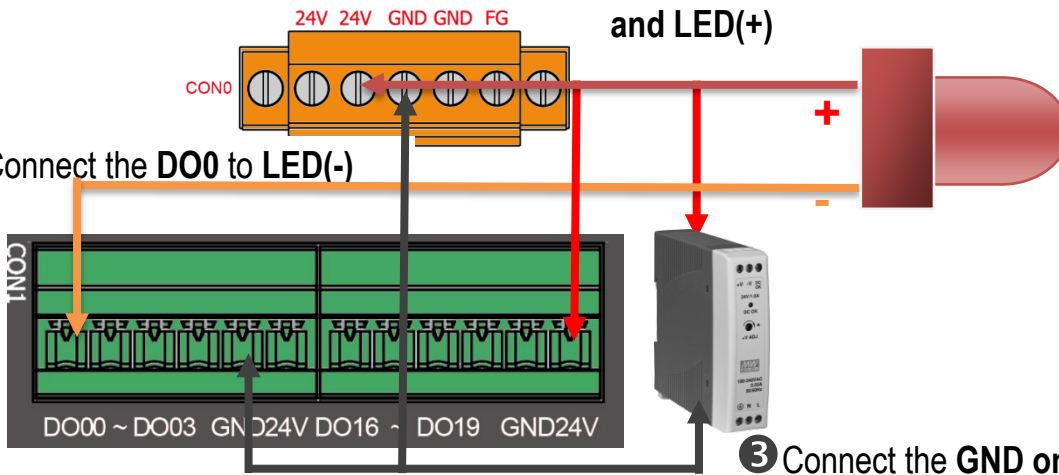
## ➤ Wire Diagrams

DO	Readback as 1 (ON State)	Readback as 0 (OFF State)
Driver Relay		
Resistance Load		

## ➤ Wiring the DO0 to LED

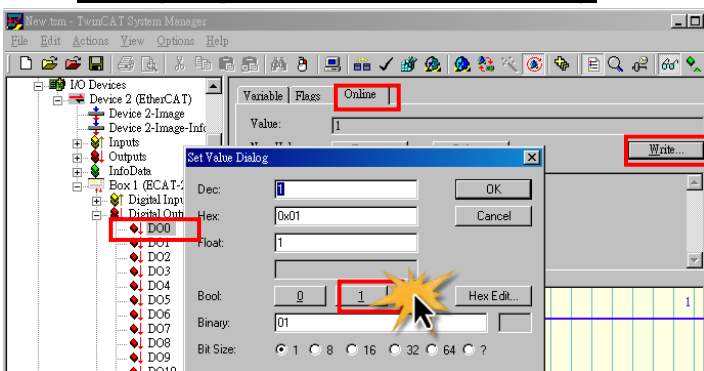
**2** Connect +24V external power supply to the 24V and LED(+)

**1** Connect the DO0 to LED(-)



**3** Connect the GND on power GND

## ➤ Verifying the DO functionality



In the left-hand of the window, click on the DO0. In the right-hand of the windows, click the online. Click Write. Click 1 (Configure DO0).

LED will be lighting

