

## Packing List

In addition to this guide, the package includes the following items:



(P)ET-2251 / (P)ET-2251-32 X 1

Quick Start x1

## Technical Support

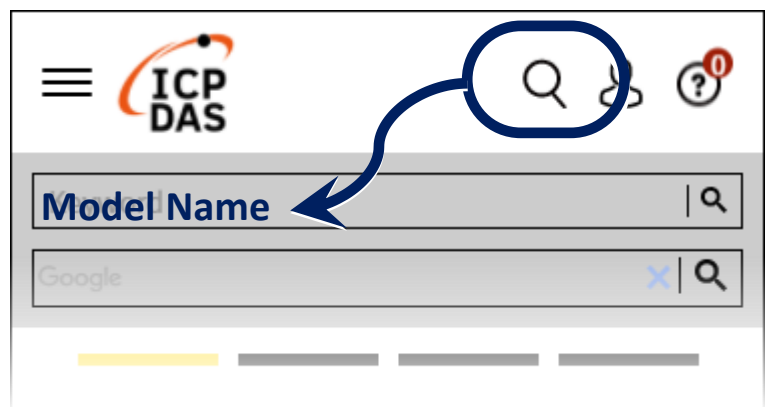
[service@icpdas.com](mailto:service@icpdas.com)

[www.icpdas.com](http://www.icpdas.com)

## Resources

How to search for drivers, manuals and spec information on ICP DAS website.

- For Mobile Web



- For Desktop Web

# 1 Connecting the Power and Host PC

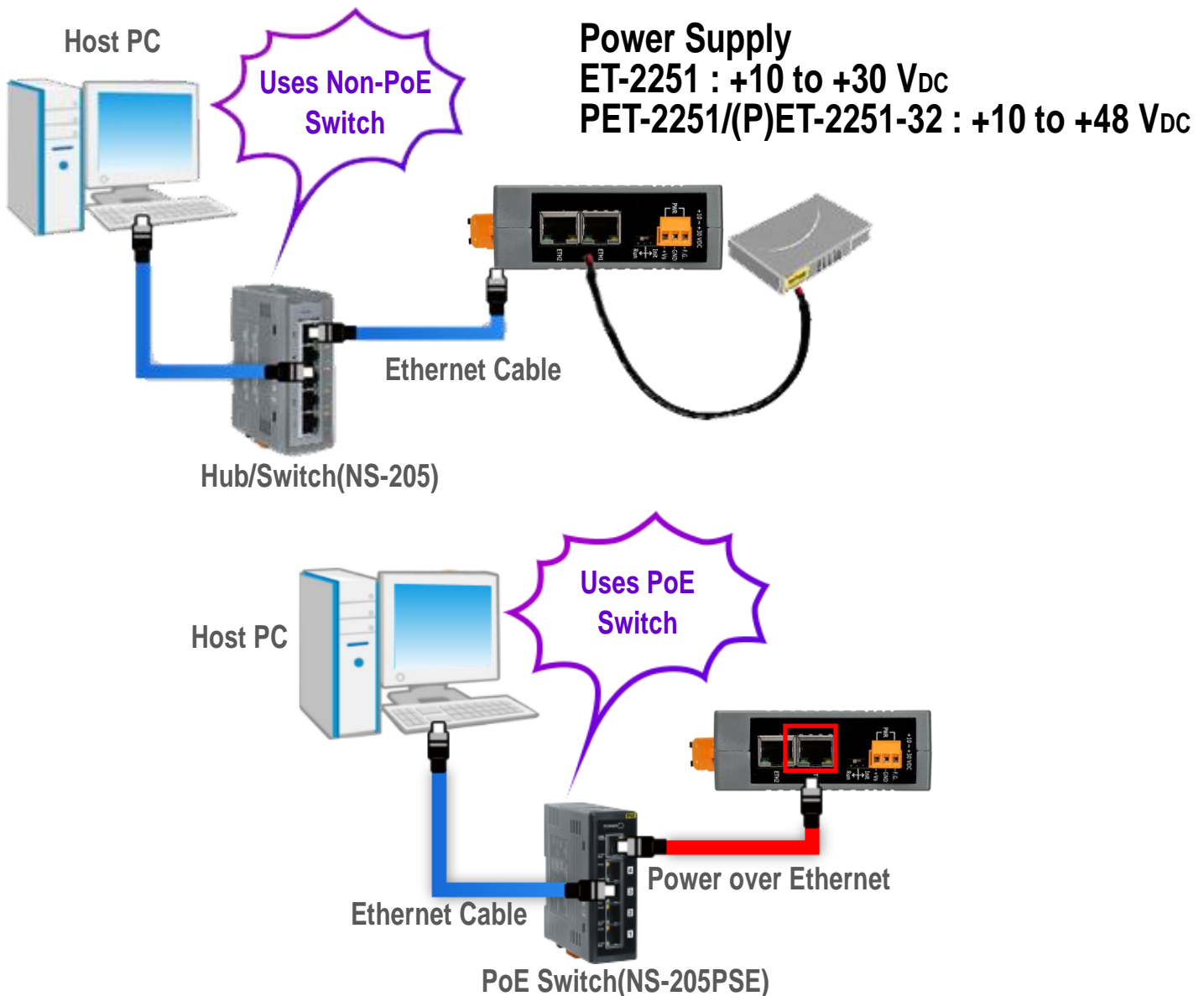
## 1) Make sure your PC has workable network settings.

Disable or well configure your Windows firewall and Anti-Virus firewall first, else the “**Search Servers**” on **Chapter 3** may not work. (Please contact with your system Administrator)

## 2) Connect both the (P)ET-2251 and your PC to the same sub network or the same Ethernet switch.

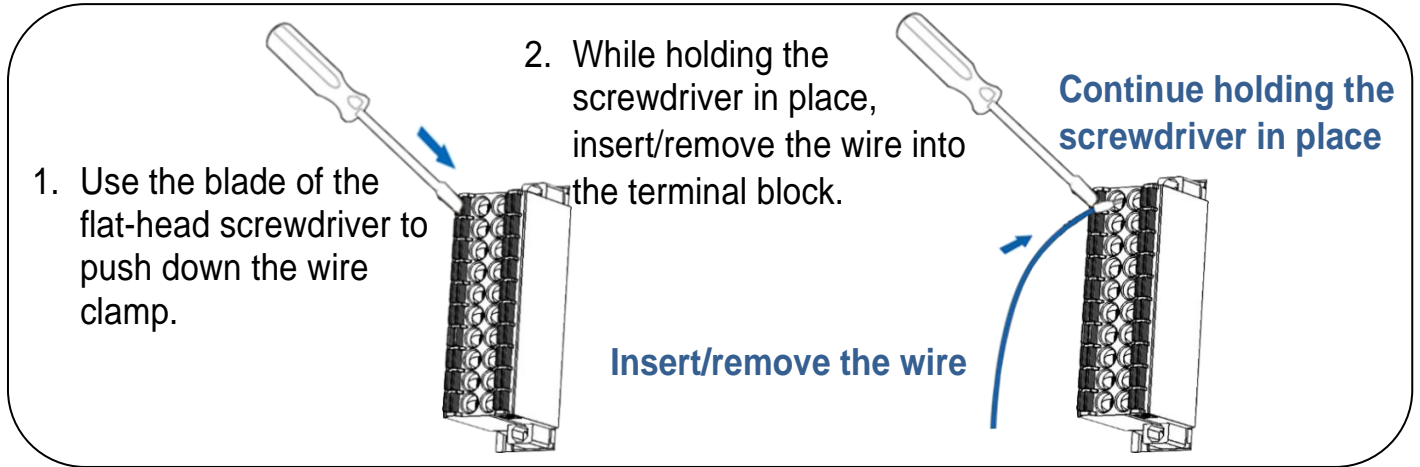
## 3) Supply power (PoE or +10 to +48 V<sub>DC</sub>) to the (P)ET-2251. ◦

**⚠ Note: Please use the first RJ-45 jack (ETH1) to connect the PoE Switch for powering through PoE. The second RJ-45 jack (ETH2) doesn't support the PoE function.**

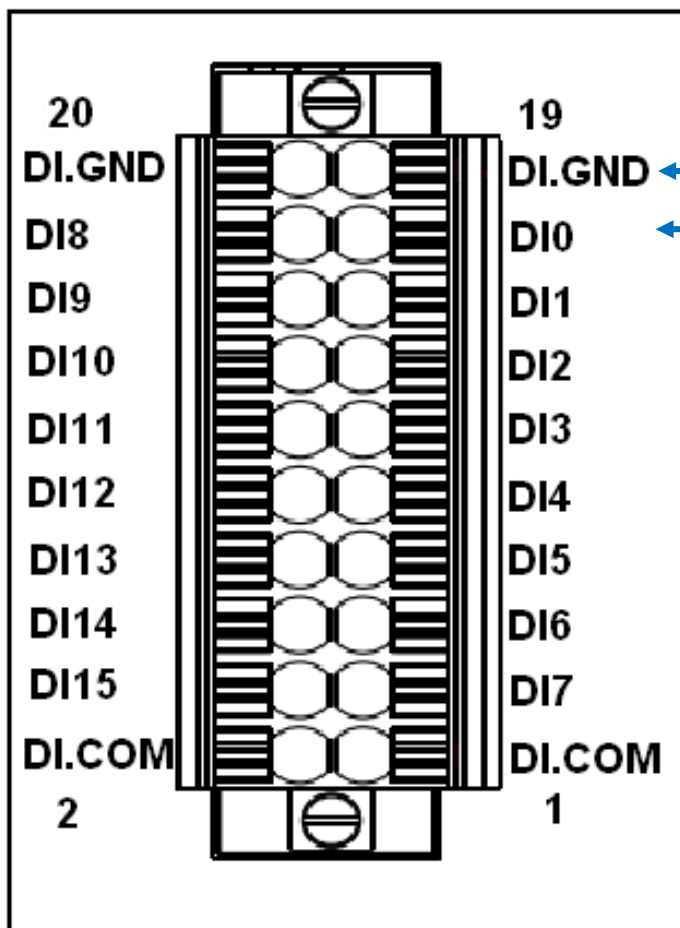


# 2 Wiring the DI for Self-test

➤ A tip for insert/remove the wire to the connector.



1) Connect the **DI0** to the **DI.GND**.



# 3 Configuring Network Setting

1) Run the eSearch Utility.

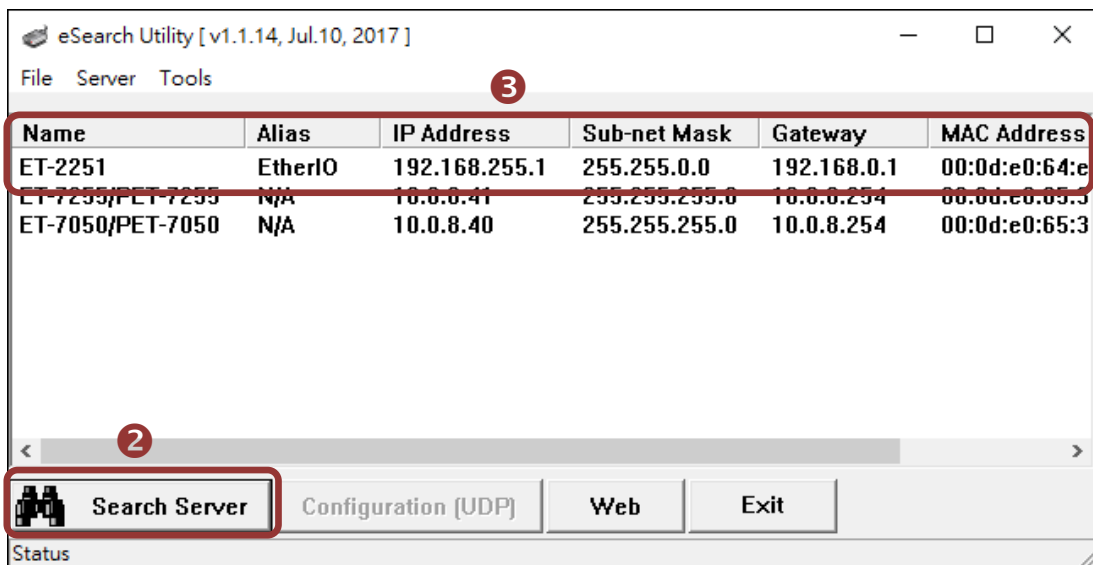
eSearch Utility download link:

<https://www.icpdas.com/en/download/index.php?nation=US&kind1=&model=&kw=eSearch>



2) Click the “Search Servers” to search your (P)ET-2251.

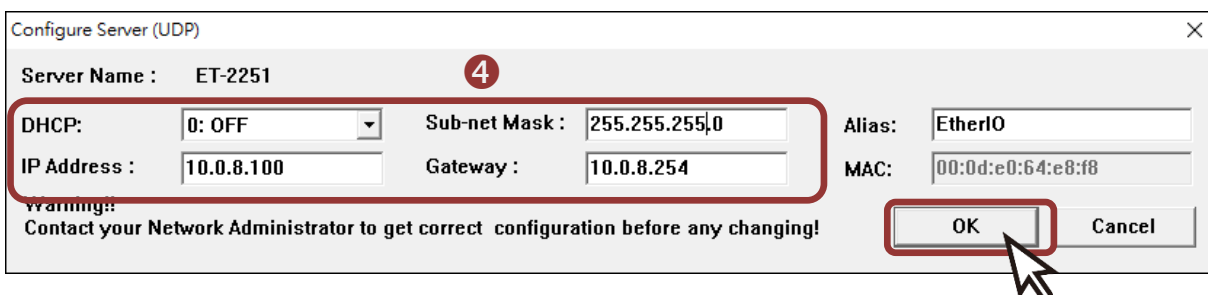
3) Double-click your (P)ET-2251 to configure the settings.



## Factory Default Settings of (P)ET-2251:

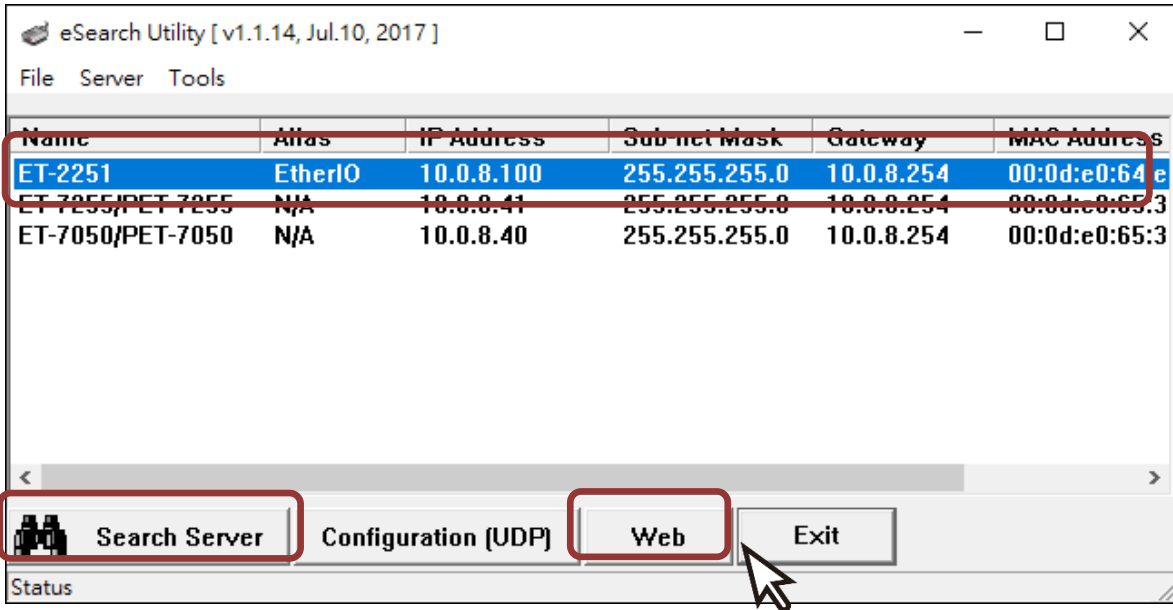
IP Address	192.168.255.1
Subnet Mask	255.255.0.0
Gateway	192.168.0.1

4) Contact your Network Administrator to obtain a correct network configuration (such as IP/Mask/Gateway). Enter the network settings and click “OK”. **⚠ Note: The (P)ET-2251 will use the new settings 2 seconds later.**

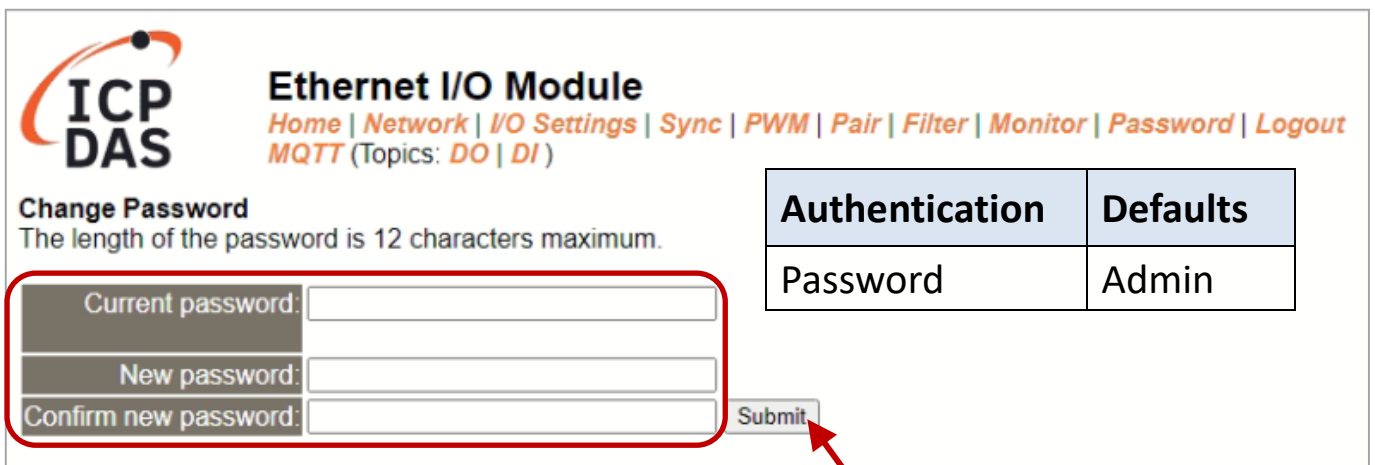


# 4 Testing your Ethernet I/O Module

- 1) Click “Search Servers” button again to ensure the (P)ET-2251 is working well with new configuration, than click the name of (P)ET-2251 to select it. °
- 2) Click the “Web” button to log in to the web configuration pages.(Or enter the URL address of the (P)ET-2251 in the address bar of the browser.)



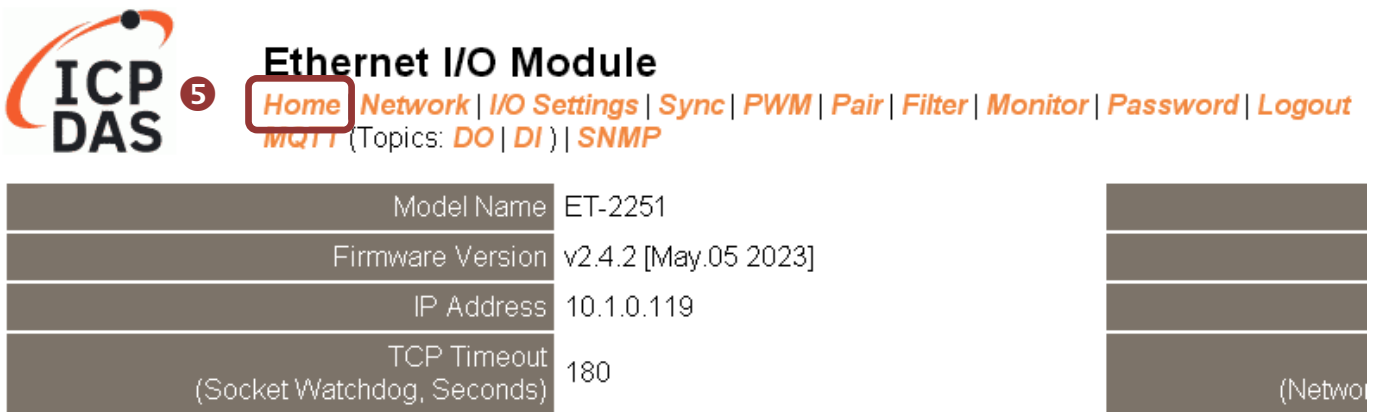
- 3) For the first time using the module, you have to change the password and click the “Submit” button.



- 4) Enter the new password in the “Login password” field and click the “Submit” button.



- 5) The “Home” page allows for a simple test to verify the Digital Input functionality.
- 6) In the “Digital I/O” section, verify the status of the DI0 is ON (green).



**Digital I/O (Modbus Address: DO=00000 to 00015, DI=10000 to 10015.)**

DI Channel	Value (10000)	Counter (30016) / Frequency (30064)
D10	6	-
D11		-
D12		-
D13		-
D14		-
D15		-
D16		-
D17		-

The "Value (10000)" column for D10 is highlighted with a red box and a circled "6".